

ANZAC 3108 Series 31m High Speed Crew Boat



AMT
AUSTRALIAN MARINE TECHNOLOGY

ANZAC 3108 Series

31m High Speed Crew Boat

VESSEL APPLICATIONS: Transportation of cargo and passengers, oil field security, Dive and ROV support, Survey and Seismic operations, Evacuations and Medevac response, standby operations, oil spill response, inshore services, relocation of buoyage marks, navigation aid repairs and maintenance, etc.

- ✓ Reverse chines for sea keeping excellence.
- ✓ Tumblehome design superstructure ensures ease and protection when berthing .
- ✓ All fuel oil tanks independent of hull providing double bottom security.
- ✓ Can be offered with ballistic protection and gun turrets.

ANZAC 3108 Series

31m High Speed Crew Boat

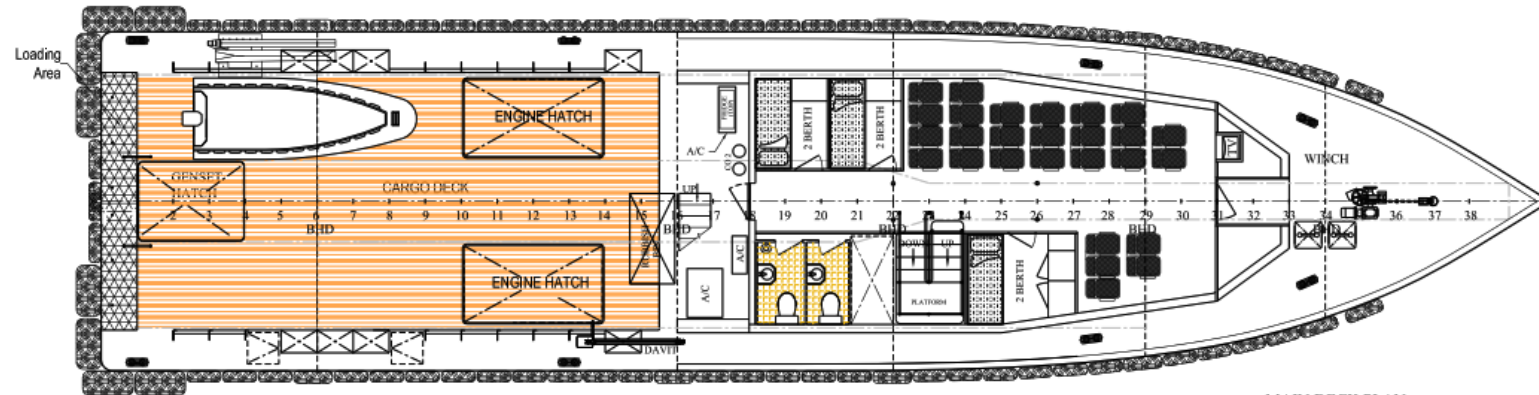
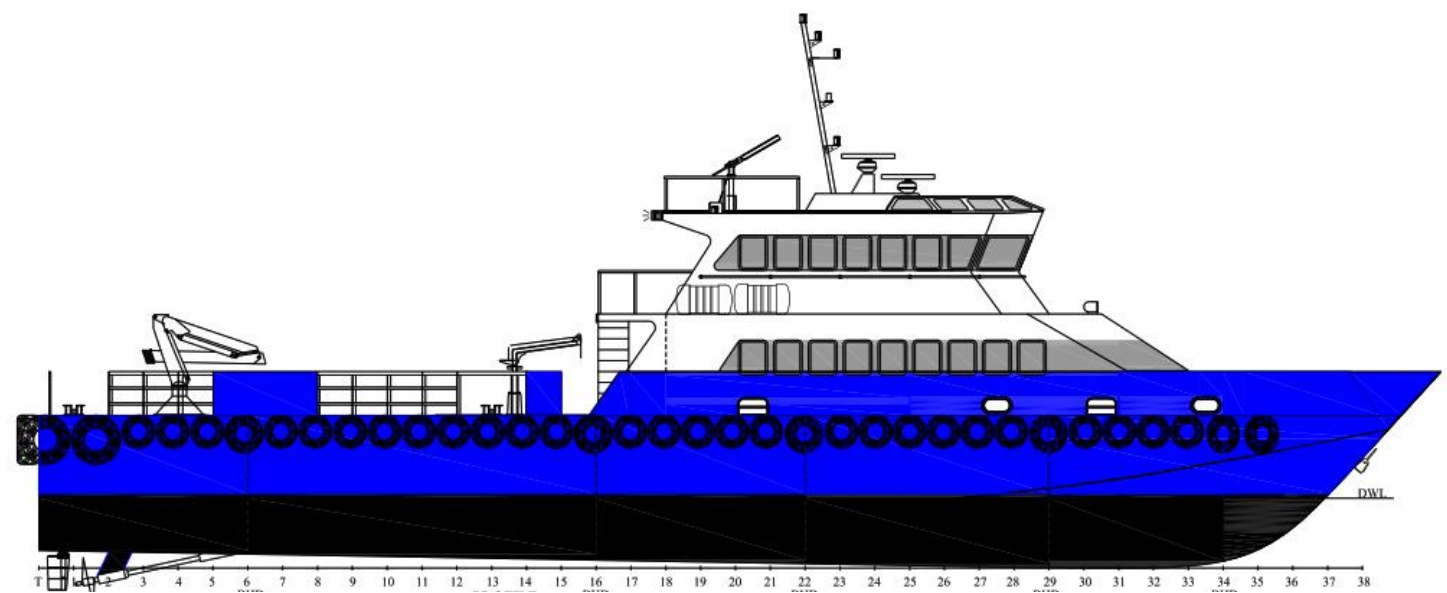
Design: Australian Marine Technology P/L

Builder: MOC Shipyards Pvt Ltd

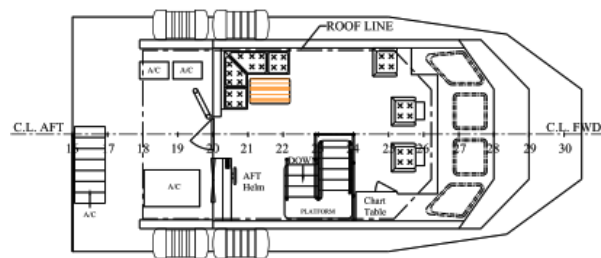
Classification: +1AI, HSLC, R3 Cargo B Industrial personnel

Flag: TBA

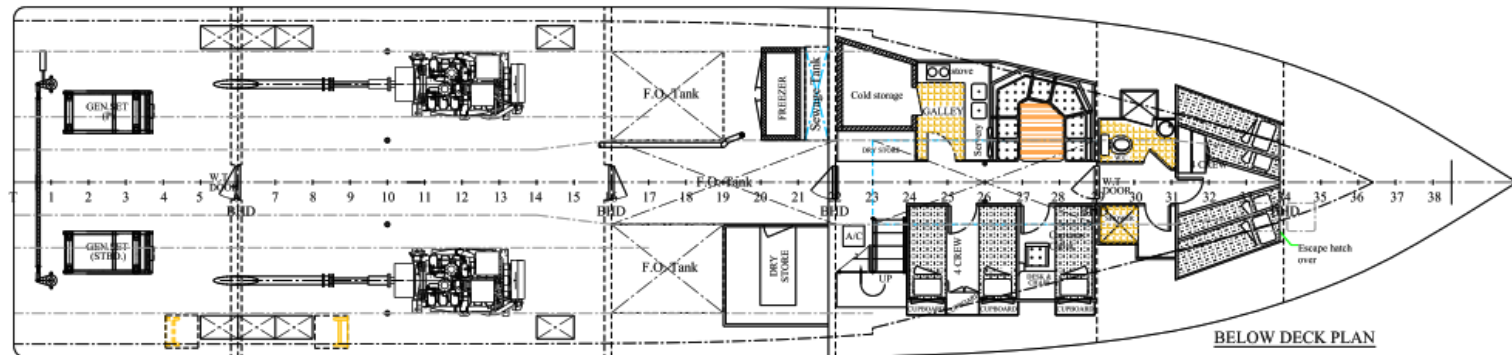
Passenger & crew: 25 + 8 crew



MAIN DECK PLAN



01 DECK PLAN



BELOW DECK PLAN

TECHNICAL SPECIFICATIONS

DIMENSIONS

- Length:** 31.0 m
- Length at waterline:** 29.60 m
- Beam:** 7.5 m
- Draft:** 2.10 m @ 50% fuel and water 100% cargo
- Construction:** Aluminium

MACHINERY

- Main Engines:** 2 x Caterpillar C32 – 1,450 HP @ 2,100 rpm
- Auxiliary Engines:** 2 x 86 kW Caterpillar, 440 volt 3 phase
- Cooling System:** Seawater cooling
- Exhausts:** Wet, through vessel sides c/w spark arrestors
- Batteries:** 4 banks for main engines and generators, starting with one emergency bank above weather deck. Rotary colhersee switch to all
- Compressor:** General unit 12 cfm for servicing equipment
- Tools:** Frontline tools, equipment and testing tools for preventative maintenance and on-board breakdowns

PERFORMANCE

- Maximum Speed:** 24 knots @ 100% MCR
- Cruising Speed:** 20 knots @ 85% MCR
- Economic Speed:** 14 knots @ 40% MCR
- Fuel Consumption:** 20 litres/hour at anchorage
 - : 300 litres/hour at economic speed
 - : 480 litres/hour at cruising speed
 - : 600 litres/hour at maximum speed
- Range:** 600 nautical miles (*with 10% reserve*)

CARGO CAPACITY

- Deadweight:** 62.0 tonnes
- Deck Strength:** 3.0 ton/m2
- Clear Deck Area:** 69 m2

TECHNICAL SPECIFICATIONS

TANK CAPACITIES

Fuel for vessel: 15,000 litres

Potable water: 10,000 litres

Sewage: 3,000 litres

ACCOMMODATION

Main Deck: High back seating for 25 passengers, 2 x freshwater fountains, TV video with LCD screens, 2 x WC for passengers, 3 x 2 man cabins

Bridge: Triple helm seating provision, 4 passenger lounge with table, chart table and aft station

Lower deck: 1 x 1 man cabin, 1 x 4 man cabin, 1 x 6 man cabin, galley with microwave, 4 element stove, rice cooker, coffee maker, fresh water fountain, double sink. Mess area for 7 crew, 1 x WC with shower, 1 shower. One cold storage for galley

TV-Stereo-DVD-VHS-CD: 2 sets

HVAC

Air Conditioning: Split system with cooling providing redundancy throughout the vessel at 900 cfm per m3

TECHNICAL SPECIFICATIONS

DECK AND HULL MISC.

Fendering: Half round rubbing strake with aircraft tyre

Gangway: Portable aluminium 3.0m

Handling: Boat Hooks, Grapple with Lanyard

Deck Equipment: 1 off hydraulic folding crane 1 Tonne SWL @ 15 metres with winch. One 5.5 metre workboat with 70 HP outboard

Mooring: Double Bit Bollards – 8 sets

Stern Loading: Flush push up

Plating: 6.0 mm deck

Access to water: Transom and side rescue zones

Passenger Transfer: 1,350 mm from waterline

Anchor: 1 x 140 kg bow

Anchor Winches: 1 x Electric 8 ton

Anchor Chain: 1 x 120 metre

Bilge System: Mechanical pump with electric back-up connected to manifold system. Electric automatic pump in all spaces. Central bilge alarm panel to helm station. Manual back-up pump and bucket to meet survey

ELECTRONICS

Radar, Sounder, Plotter: Multifunction display

Auto Pilot: Yes

GPS and DGPS: Yes

VHF Radio: Yes to survey requirement

HF / SSB Radio: To survey requirement

Compass: Yes to survey requirement

Barometer and Clock: One each at main helm station

AIS: Yes

Search Light: 2 x Sanshin HR-1012

Intercom: GME to machinery space, accommodation area, mess area and helm

Public Address: Raymarine 430 with 2 speakers in wheelhouse roof

Charts: All current charts for operational areas, hard copies and electronic

General Alarm: Yes to survey requirement

TECHNICAL SPECIFICATIONS

SAFETY EQUIPMENT

Fire Hoses and Nozzles: 2 sets with spray nozzles

Fire Hydrants: 2 stations

Fire Control Plan / Muster List: Class approved

General Emergency Alarm: Yes

Life Rafts: 2 x 35 man

Man Over Board Rings: 8 off, 2 with lights

Solas Life Jackets: 40 Solas with 10% child sized

Parachute Rocket Flares: 4 as per survey requirements

Hand Held Flares: 8 as per survey requirements

First Aid Kits: 1 x type E, 1 x Sutures kit

Fixed Fire Fighting System: Fitted in machinery spaces

Emergency Escape: Machinery spaces and accommodation

Fuel Shut Off: Remote operated

Oxygen Resuscitator: Yes

Defibrillator: Yes

LIGHTING

Navigation Lights: Port, Starboard, Masthead, Stern & Anchor. 1 x towing, 1 all-round white and 2 all-round red

Floodlights: 2 x forward and 2 x aft

Search Lights: 1 set

Deck Lights: 6 units recessed

Navigation Lights: Class approved

Torches: 2 x Signalling

PUBLICATIONS

Stability Booklet: 2 sets approved by Classification Society

Operations Manual & Procedures: As approved by Classification Society

Vessel Log Book: To ISO/ISM requirements

CERTIFICATION

All vessels are constructed to IACS Classification under the applicable rules of the flag state of destination.



AMT
AUSTRALIAN MARINE TECHNOLOGY

Australian Marine Technology Pty Ltd
PO Box 655, Tugan 4224 Queensland, Australia
Email: info@mocshipyard.com Web: www.mocshipyard.com